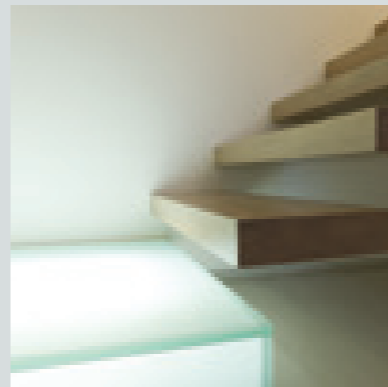
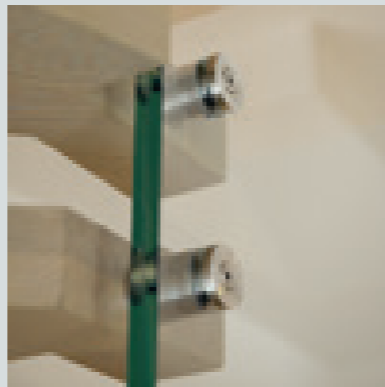
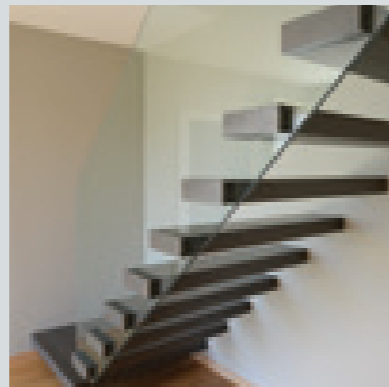
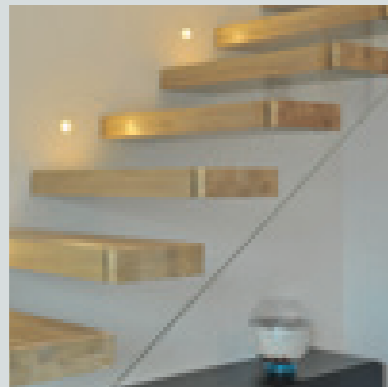


MANHATTAN



Manhattan #1

Manhattan #2

Manhattan #3

Manhattan #4

Manhattan #5

Manhattan #6

La scala a sbalzo.

Unica, leggera, inconfondibile.

La scala a sbalzo Manhattan è progettata in funzione del tipo di muro sul quale andrà ancorata.

Gradino da 80 mm, le scale della linea Manhattan possono essere realizzate con ringhiera in vetro, acciaio inox, metallo.

The cantilever staircase.

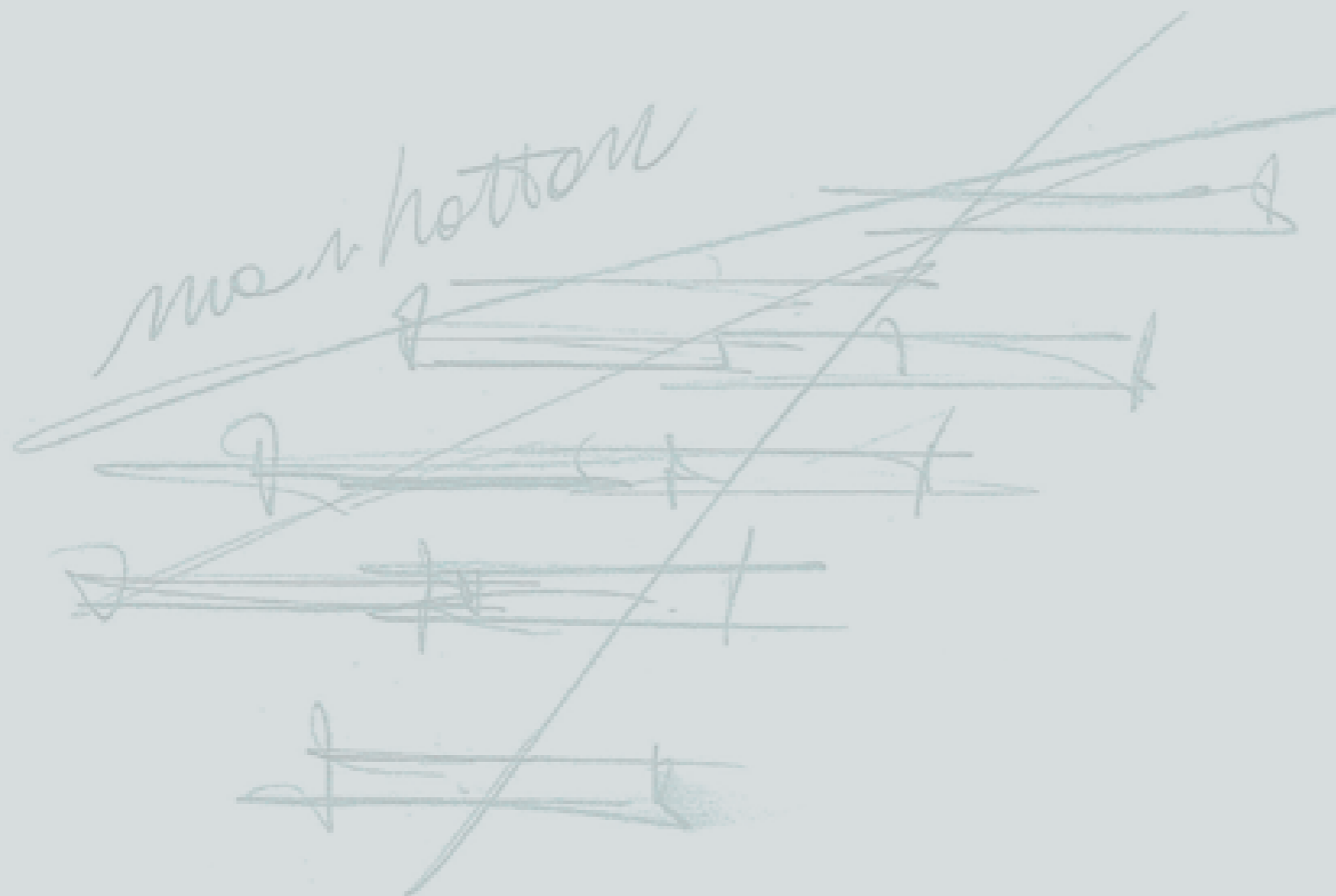
Unique, light, unmistakable.

The Manhattan cantilever staircase is designed in relation to the type of wall where it has to be anchored. Tread 80 mm of thickness, the Manhattan staircases can be realized with balustrade in glass, stainless steel and metal.

L'escalier suspendu.

Unica, légère, incomparable.

L'escalier suspendu Manhattan est réalisé sur la base de la typologie de mur sur lequel il doit être ancré. Marches 80 mm d'épaisseur, les escaliers de la ligne Manhattan peuvent être réalisés avec garde-corps en verre, acier inox et métal.





8

manhattan #1

Scala a sbalzo con gradini in rovere spazzolato naturale.
Ringhiera in vetro extra-chiaro in un unico pezzo.

-
*Cantilever staircase with oiled brushed oak treads.
One piece structural low iron glass balustrade.*

-
*Escalier suspendu avec marches en chêne brossé naturel.
Un seul pièce de garde-corps en verre extra-clair.*



9





manhattan #2

Scala a sbalzo con gradini in rovere verniciato a campione.

Parapetto con pareti in vetro strutturale extra-chiaro e connettori inox in vista.

- *Cantilever staircase with varnished oak treads.*

Storey height structural low iron glass balustrade with brushed stainless steel stand off fittings.

- *Escalier suspendu avec marches en chêne avec finition sur échantillon.*

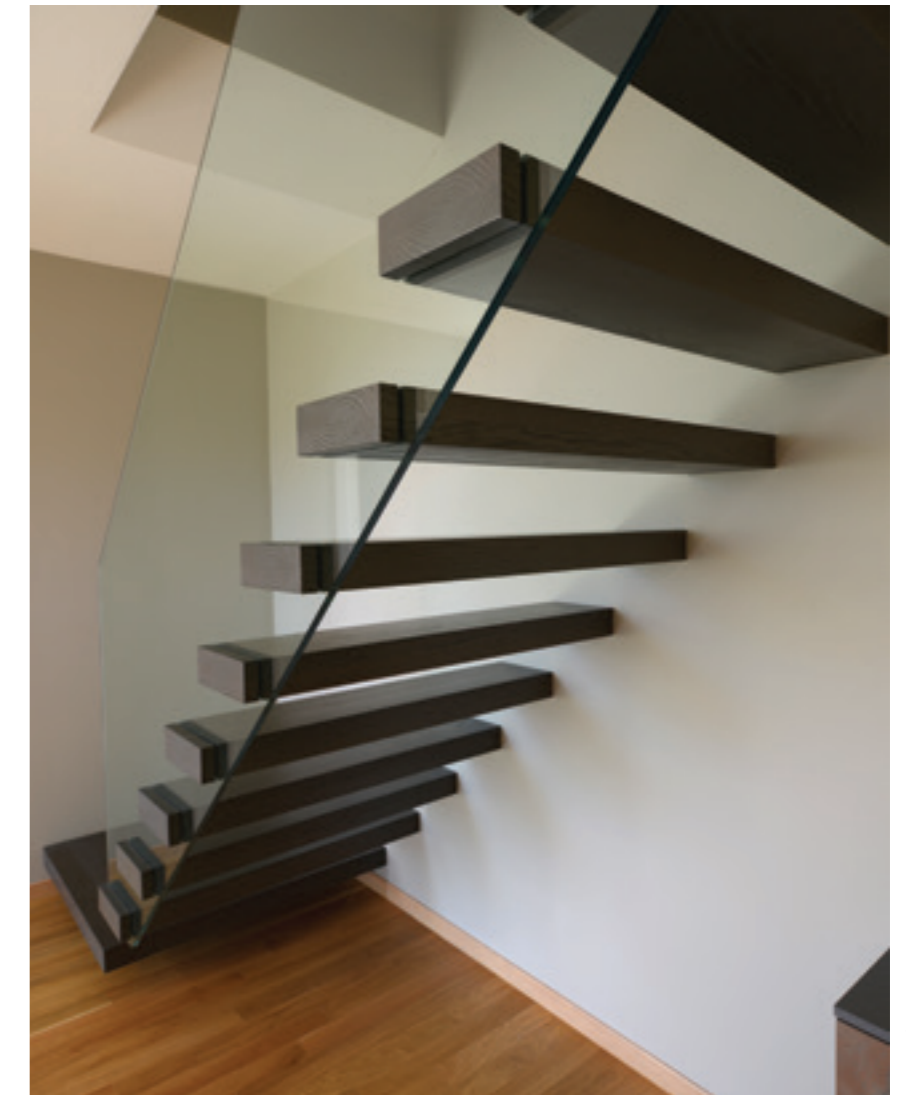
Garde-corps avec paroi en verre structurel extra-clair et entretoises visibles en acier inox.

10

11



12



13

manhattan #3

Scala a sbalzo con gradini in rovere grey.
Ringhiera in vetro trasparente in un unico pezzo.

-
*Cantilever staircase with dark grey stained oak treads.
One piece structural low iron glass balustrade.*

-
*Escalier suspendu avec marches en chêne brossé gris.
Un seul pièce de garde-corps en verre extra-clair.*

manhattan #4

Scala a sbalzo con gradini in faggio lamellare naturale.
Pianerottolo di partenza in vetro stratificato trasparente.
Ringhiera in vetro trasparente in un unico pezzo.

-
*Cantilever staircase with laminated beech treads.
Lower landing comprising sand blasted glass box.*

-
*Escalier suspendu avec marches en hêtre lamellé collé.
Palier de départ en verre transparent.*

14



15



16

17

manhattan #5

Scala a sbalzo con gradini in faggio lamellare noce chiaro.
Ringhiera a pannelli in vetro extra-chiaro.

-
Cantilever staircase with dark walnut stained laminated beech treads.

Structural low iron glass balustrade.

-
*Escalier suspendu avec marches en hêtre lamellé collé.
Garde-corps avec panneaux en verre extra-clair.*



18



manhattan #6

Scala a sbalzo con gradini in rovere naturale.
Vetro strutturale centrale di sostegno .

-
*Cantilever staircase with oiled oak treads.
Treads supported by central storey height structural glass.
wall and brushed stainless steel stand off fittings.*

-
*Escalier suspendu avec marches en hêtre lamellé.
Verre structurel central comme soutien.*



19